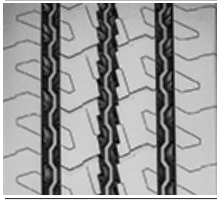


# All Position

## CrossTrac HA3 20/32"

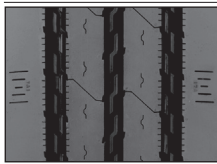


ARTICLE #	WIDTH	DEPTH
18214990000	190	20/32"
18215000000	200	20/32"
18215010000	210	20/32"
18215020000	220	20/32"
18215030000	230	20/32"
18215040000	240	20/32"

- Zigzag center groove geometry increases the number of biting edges for increased traction.
- Pyramidal stone ejectors in all tread grooves to stop stone retention for long casing life.
- Durable compounding for mileage.

Application: Regional Hauling & On/Off, All Position

## HSR2 18/32"

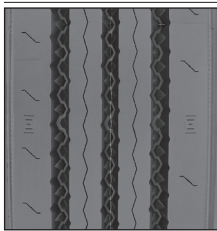


ARTICLE #	WIDTH	DEPTH
18310500000	200	18/32"

- Optimized cut and chip resistant tread compound.
- Patented groove geometry for better resistance to cracking and tearing and minimum stone retention.

Application: Regional Hauling & On/Off, All Position

## HSR 18/32"

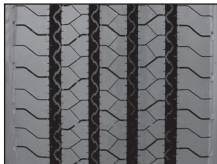


ARTICLE #	WIDTH	DEPTH
18208610000	185	18/32"
18207940000	195	18/32"
18204780000	215	18/32"
18204790000	225	18/32"
18204800000	235	18/32"
18204810000	245	18/32"
18310610000	260	18/32"

- Shallower cut and chip resistant tread for long tread life.
- Pyramidal stone ejectors in all tread grooves to stop stone retention for long casing life.
- Robust shoulder rib for long tread life.

Application: Regional Hauling & On/Off, All Position

## HSR1 16/32"

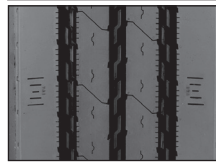


ARTICLE #	WIDTH	DEPTH
18310020000	215	16/32"
18211270000	205	16/32"
18207900000	225	16/32"
18207910000	235	16/32"

- Tread compound design to provide long life in regional applications.
- Patented innovative groove technology leads to minimum stone retention, extending casing life.
- Tread pattern designed for excellent wet traction and reduced noise.

Application: All Position, Short and Long Haul. On/Off Highway Service (depending on conditions)

## HSR2 20/32"

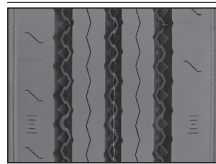


ARTICLE #	WIDTH	DEPTH
18310510000	215	20/32"
18310520000	225	20/32"
18310530000	235	20/32"

- Optimized cut and chip resistant tread compound.
- Patented groove geometry for better resistance to cracking and tearing and minimum stone retention.

Application: Regional Hauling & On/Off, All Position

## HSR 23/32"



ARTICLE #	WIDTH	DEPTH
18204730000	215	23/32"
18204740000	225	23/32"
18204750000	235	23/32"
18204760000	245	23/32"
18310600000	260	23/32"

- Deep cut and chip resistant tread for long tread life.
- Pyramidal stone ejectors in all tread grooves to stop stone retention for long casing life.
- Robust shoulder rib for long tread life.

Application: Regional Hauling & On/Off, All Position

## HSR 16/32"



ARTICLE #	WIDTH	DEPTH
18310030000	180	16/32"
18310460000	195	16/32"

- 16/32" cut and chip resistant tread for long tread life.
- Aggressive tread design provides excellent lateral stability to minimize squirm, and improve wet handling performance.
- Closed shoulder to protect against curbing, cuts and abrasions.

Application: Regional Hauling & On/Off, All Position

## LSR1 15/32"



ARTICLE #	WIDTH	DEPTH
18206070000	160	15/32"
18206080000	180	15/32"
18206090000	188	15/32"
18206100000	195	15/32"
18207890000	205	15/32"

- Advanced tread compound provides high mileage in regional applications.
- Multi-rib tread design features excellent wet traction, lateral stability and reduced noise.
- Unique pyramid shaped stone ejection system in all tread grooves reduce stone retention and casing penetrations.

Application: All-Position, Short & Long Haul

**HSC1 24/32"**

ARTICLE #	WIDTH	DEPTH
18207080000	215	24/32"
18207090000	225	24/32"
18207100000	235	24/32"
18207110000	245	24/32"
18207120000	255	24/32"

- Tread pattern and compound integrated to deliver optimal mileage.
- Wide tread and shoulder ribs improve wear and increase performance.

Application: Coal haulers, logging, construction, waste haulers and other All Position service

**HSC 18/32"**

ARTICLE #	WIDTH	DEPTH
18205480000	215	18/32"
18205490000	225	18/32"
18205500000	235	18/32"
18205820000	245	18/32"
18205830000	255	18/32"

- On/Off-road compound increases resistance to cuts, chips and chunks, reduces the number, and most importantly the depth of any cuts and tears.
- Patented groove technology leads to minimum stone retention, extending casing life.

Application: On/Off Road, All Position

**ContiCityServiceHA3 26/32"**

ARTICLE #	WIDTH	DEPTH
18211300000	220	26/32"
18211310000	230	26/32"
18211320000	240	26/32"
18210500000	250	26/32"
18210510000	260	26/32"
18210520000	270	26/32"
18210530000	280	26/32"

- Optimized tread compound for long removal mileage.
- Robust four rib tread design for increased durability in high scrub applications.
- Zig-zag groove geometry engineered specifically for use in waste haul.

Application: Waste haul, All Position

**HSC 23/32"**

ARTICLE #	WIDTH	DEPTH
18205510000	215	23/32"
18205520000	225	23/32"
18205530000	235	23/32"
18207640000	245	23/32"

- On/Off-road compound increases resistance to cuts, chips and chunks, reduces the number, and most importantly the depth of any cuts and tears.
- Patented groove technology leads to minimum stone retention, extending casing life.

Application: On/Off Road, All Position

**HCS 32/32"**

ARTICLE #	WIDTH	DEPTH
18206930000	215	32/32"
18206940000	225	32/32"
18211290000	235	32/32"
18206950000	245	32/32"
18209220000	360	32/32"
18209230000	380	32/32"

- Cut and tear resistant tread compound for long tread life in On/Off road conditions.
- Outstanding self-cleaning properties ensure a long service life.
- Aggressive tread pattern provides excellent traction.

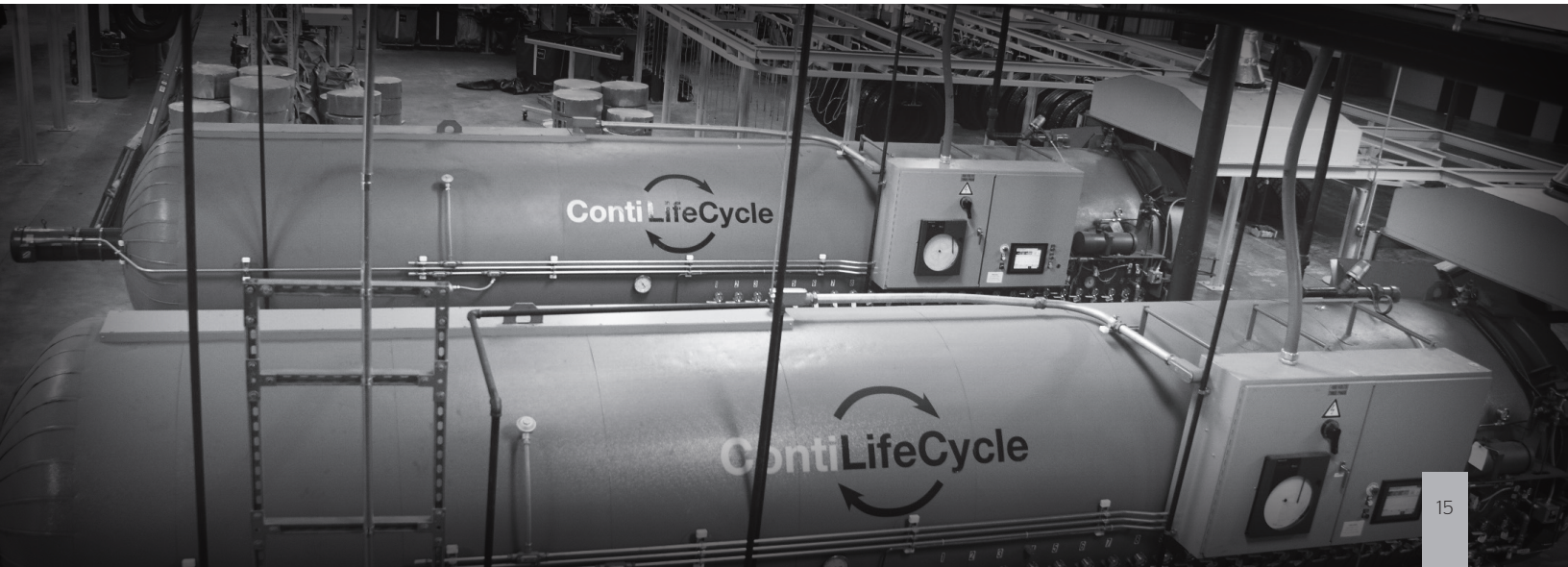
Application: Construction & On/Off Highway Service, All Position

**HSU2 26/32"**

ARTICLE #	WIDTH	DEPTH
18207160000	250	26/32"
18207170000	260	26/32"
18207180000	270	26/32"
18207190000	280	26/32"

- Shallower cut and chip resistant tread for long tread life.
- Pyramidal stone ejectors in all tread grooves to stop stone retention for long casing life.
- Robust shoulder rib for long tread life.

Application: Regional Hauling & On/Off, All Position, Waste Haul



# Drive Position

HDL2 DL 28/32"	ARTICLE #	WIDTH	DEPTH
	18207130000	215	28/32"
	18207140000	225	28/32"
	18207150000	235	28/32"
	18208190000	245	28/32"
	18209420000	260	28/32"

- Optimized compound for regional/long hauling with ultra deep tread delivers high mileage.
- Minimized wear and excellent traction over the life of the tire through a wide, closed shoulder tread and numerous tread blocks with multiple grip edges.
- Patented innovative groove technology leads to minimum stone retention, extending casing life.

Application: Long Haul, Over the Highway, Drive Position

HDL EP 26/32"	ARTICLE #	WIDTH	DEPTH
	18204820000	215	26/32"
	18204830000	225	26/32"
	18204840000	235	26/32"
	18204850000	245	26/32"

- Advanced, fuel efficient compound provides long original mileage and rolling resistance.
- Closed shoulder 26/32" tread design provides even tread wear while still providing excellent traction.
- Patented innovative groove technology leads to minimum stone retention, extending casing life.



Application: Long Haul, Over the Highway, Drive Position

HDL 26/32"	ARTICLE #	WIDTH	DEPTH
	18208240000	215	26/32"
	18208250000	225	26/32"
	18208260000	235	26/32"
	18208310000	245	26/32"

- Cut and tear resistant tread compound for excellent wear in regional and light On/Off drive applications.
- Closed shoulder 26/32" tread design provides even tread wear while still providing excellent traction.
- Patented innovative groove technology leads to minimum stone retention, extending casing life.

Application: Long Haul, Over the Highway, Drive Position

HDL 13/32"	ARTICLE #	WIDTH	DEPTH
	18207920000	200	13/32"
	18207930000	215	13/32"
	18313000000	225	13/32"
	18206260000	235	13/32"

- Cut and tear resistant tread compound for excellent wear in regional and light On/Off drive applications.
- Closed shoulder 13/32" tread design provides even tread wear and traction for trade truck use.
- Patented innovative groove technology leads to minimum stone retention, extending casing life.

Application: Long Haul, Over the Highway, Drive Position, Trade Truck Drive

HDL2 DL EP 28/32"	ARTICLE #	WIDTH	DEPTH
	18208070000	215	28/32"
	18208080000	225	28/32"
	18208090000	235	28/32"
	18208100000	245	28/32"

- Advanced, fuel efficient compound provides long original mileage and rolling resistance.
- Minimized wear and excellent traction over the life of the tire through a wide, closed shoulder tread and numerous tread blocks with multiple grip edges.
- Patented innovative groove technology leads to minimum stone retention, extending casing life.



Application: Long Haul, over the highway, drive position

HDL EP 20/32"	ARTICLE #	WIDTH	DEPTH
	18204860000	215	20/32"
	18204870000	225	20/32"
	18204880000	235	20/32"
	18204890000	245	20/32"

- Advanced, fuel efficient compound provides long original mileage and rolling resistance.
- Closed shoulder 20/32" tread design provides even tread wear while still providing excellent traction.
- Patented innovative groove technology leads to minimum stone retention, extending casing life.



Application: Long Haul, Over the Highway, Drive Position

HDL 20/32"	ARTICLE #	WIDTH	DEPTH
	18208270000	215	20/32"
	18208280000	225	20/32"
	18208290000	235	20/32"
	18208300000	245	20/32"

- Cut and tear resistant tread compound for excellent wear in regional and light On/Off drive applications.
- Closed shoulder 20/32" tread design provides even tread wear while still providing excellent traction.
- Patented innovative groove technology leads to minimum stone retention, extending casing life.

Application: Long Haul, Over the Highway, Drive Position

HDL2 EP 24/32"	ARTICLE #	WIDTH	DEPTH
	18209240000	390	24/32"
	18206780000	400	24/32"

- Super single drive tire with advanced compounding for low rolling resistance and long mileage.



Application: Long Haul, over the highway, drive position



**HDR2 26/32"**



ARTICLE #	WIDTH	DEPTH
18208710000	205	26/32"
18315110000	215	26/32"
18315120000	225	26/32"
18315130000	235	26/32"
18315140000	245	26/32"

- Cut and tear resistant tread compound for excellent wear in regional and light On/Off drive applications.
- Optimal power transmission on various road conditions, through an innovative tread compound.
- Unidirectional, arrow shaped tread pattern minimizes typical drive tire wear effects.

Application: Regional Hauling & Light On/Off, Drive Position

**HDR2 EP 26/32"**



ARTICLE #	WIDTH	DEPTH
18208110000	215	26/32"
18208120000	225	26/32"
18208130000	235	26/32"
18208140000	245	26/32"

- Advanced, fuel efficient compound provides long original mileage and rolling resistance.
- Optimal power transmission on various road conditions, through an innovative tread compound.
- Unidirectional, arrow shaped tread pattern minimizes typical drive tire wear effects.



Application: Regional Hauling & Light On/Off, Drive Position

**HDR1 22/32"**



ARTICLE #	WIDTH	DEPTH
18207790000	215	22/32"
18207800000	225	22/32"
18207810000	235	22/32"
18207820000	245	22/32"

- Cut and tear resistant tread compound for excellent wear in regional and light on/off applications.
- Open shoulder tread design provides excellent wet/dry traction, resists irregular wear and reduces stone retention.
- Innovative lug angle provides outstanding traction throughout the life of the original tire.

Application: Regional Hauling & Light On/Off, Drive Position

**HDR1 20/32"**

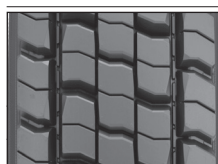


ARTICLE #	WIDTH	DEPTH
18207880000	190	20/32"
18207870000	200	20/32"

- Cut and tear resistant tread compound for excellent wear in regional and light on/off applications.
- Open shoulder tread design provides excellent wet/dry traction, resists irregular wear and reduces stone retention.
- Innovative lug angle provides outstanding traction throughout the life of the original tire.

Application: Regional Hauling & Light On/Off, Drive Position

**HDR2 22/32"**



ARTICLE #	WIDTH	DEPTH
18208690000	185	22/32"
18208700000	195	22/32"

- Cut and tear resistant tread compound for excellent wear in regional and light On/Off applications.
- Optimal power transmission on various road conditions, through an innovative tread compound.
- Unidirectional, arrow shaped tread pattern minimizes typical drive tire wear effects.

Application: Regional Hauling & Light On/Off, Drive Position

**HDR1 26/32"**



ARTICLE #	WIDTH	DEPTH
18208840000	215	26/32"
18208850000	225	26/32"
18208860000	235	26/32"
18208870000	245	26/32"

- Cut and tear resistant tread compound for excellent wear in regional and light on/off applications.
- Open shoulder tread design provides excellent wet/dry traction, resists irregular wear and reduces stone retention.
- Innovative lug angle provides outstanding traction throughout the life of the original tire.

Application: Regional Hauling & Light On/Off, Drive Position

**HDR1 EP 22/32"**



ARTICLE #	WIDTH	DEPTH
18207700000	215	22/32"
18207710000	225	22/32"
18207720000	235	22/32"
18207730000	245	22/32"

- Advanced, fuel efficient compound provides long original mileage and rolling resistance.
- Open shoulder tread design provides excellent wet/dry traction, resists irregular wear and reduces stone retention.
- Innovative lug angle provides outstanding traction throughout the life of the original tire.



Application: Regional hauling & light On/Off, Drive position

**HDR1 16/32"**



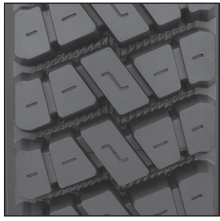
ARTICLE #	WIDTH	DEPTH
18209340000	160	16/32"
18209350000	170	16/32"
18209360000	180	16/32"
18207840000	190	16/32"
18207850000	200	16/32"
18207860000	215	16/32"

- Cut and tear resistant tread compound for excellent wear in regional and light On/Off applications.
- Open shoulder tread design provides excellent wet/dry traction, resists irregular wear and reduces stone retention.
- Innovative lug angle provides outstanding traction throughout the life of the original tire.

Application: Regional Hauling & Light On/Off, Drive Position

# Drive Position

## HDC1 26/32"



ARTICLE #	WIDTH	DEPTH
18207520000	200	26/32"
18206960000	215	26/32"
18206970000	225	26/32"
18206980000	235	26/32"
18206990000	245	26/32"
18207000000	260	26/32"
18207010000	280	26/32"

- On/Off-road compound increases resistance to cuts, chips and chunks, reduces the number, and most importantly the depth of any cuts and tears.
- Aggressive, open shoulder tread design ensures reliable grip and good handling both on and off the road.

Application: On/Off & Off the Road, Drive

## Scandinavia HD3 25/32"

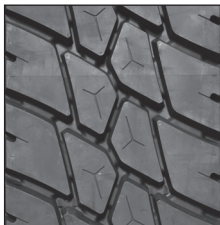


ARTICLE #	WIDTH	DEPTH
1821140000	210	25/32"
18211350000	220	25/32"
18211360000	230	25/32"
18211370000	240	25/32"

- Directional\* tread pattern for improved traction.
- Full sipes located on center ribs in center grooves at 22/32" for improved snow evacuation.
- Pocket sipes featured throughout the tread pattern at 13/32"
- Optimized groove geometry for stone trapping resistance.
- Tie bars included to improve wear mileage near end of life.

Application: Heavy snow/mud, drive position

## CityService HD3 32/32"

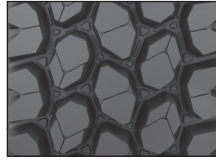


ARTICLE #	WIDTH	DEPTH
18209150000	220	32/32"
18209160000	230	32/32"
18209170000	240	32/32"
18209180000	250	32/32"
18209190000	260	32/32"
18209200000	270	32/32"
18209210000	280	32/32"

- Deep 32/32" tread depth and open shoulder tread design for excellent traction.
- Shoulder notches included in design to prevent heat build-up.
- Chip and chunk resistant compounding for endurance in waste and other high scrub applications.
- Tie bars included to improve wear mileage near end of life.

Application: Waste, Urban, Construction. Drive position.

## HDC1HT 32/32"

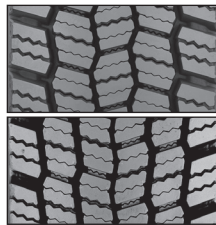


ARTICLE #	WIDTH	DEPTH
18211140000	225	32/32"
18211150000	235	32/32"
18211160000	245	32/32"

- Diamond shaped tread lug design and shoulder notches are optimal for chaining.
- Alternating groove geometry and stone bumper system for maximum stone ejection.
- Aggressive cut and chip resistant compounding to resist the most severe of applications.

Application: Heavy Drive Construction High Traction

## HDW2 27/32"



ARTICLE #	WIDTH	DEPTH
18209370000	215	27/32"
18209380000	225	27/32"
18209390000	235	27/32"
18209400000*	245	27/32"
18209410000*	260	27/32"

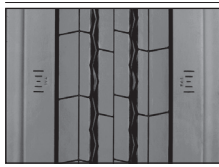
- All season tire ensures optimum performance in a variety of winter conditions from ice to deep snow.
- Directional\* tread design with more than 1,000 sipes provides excellent traction and lateral stability in 245 and 260 mm treads.

Application: Extreme weather conditions, drive position



# Trailer Position

## EcoPlusHT3 13/32"



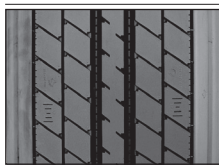
ARTICLE #	WIDTH	DEPTH
18208620000	215	13
18208630000	225	13
18208640000	235	13
18208650000	245*	13

- Ultra low rolling resistant compounding.
- Optimized tread pattern resists irregular wear.
- 13/32<sup>nd</sup> tread depth for long removal mileage.
- Fuel Saving Edge technology available in 245mm tread width for maximum fuel efficiency.



Application: Long Haul, Over the Highway, Trailer Position

## HTL 13/32"

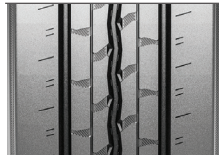


ARTICLE #	WIDTH	DEPTH
18208720000	200	13/32"
18205420000	210	13/32"
18205440000	220	13/32"
18205460000	230	13/32"
18206800000	240	13/32"

- 13/32" tread depth minimizes tread squirm and irregular wear.
- Visual Alignment Indicators (VAI®) alert user to tire tracking problems.
- Patented innovative groove technology leads to minimum stone retention, extending casing life.

Application: Long Haul, Over the Highway, Trailer Position

## Hybrid HT3 16/32"

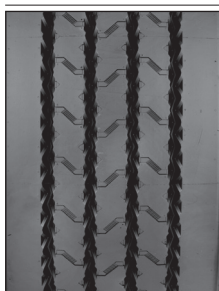


ARTICLE #	WIDTH	DEPTH
18214630000	210	16/32"
18214670000	220	16/32"
18214680000	230	16/32"

- Winged tread for use in high scrub applications, particularly spread-axle and multi-axle.
- Durable high mileage compounding.
- Pyramidal stone ejection system integrated into the center groove for added casing protection.

Application: Long Haul to Regional, Trailer Position

## HTR2 SA 16/32"

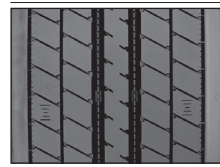


ARTICLE #	WIDTH	DEPTH
18213680000	200/230	16/32"
18207530000	210/240	16/32"
18207540000	220/250	16/32"
18207550000	230/260	16/32"
18207560000	240/270	16/32"
18207570000	250/280	16/32"
18207580000	260/290	16/32"
18207590000	270/300	16/32"
18207600000	290/320	16/32"

- High mileage achieved through precise balance of tread compound and geometry.
- Winged tread for use in high scrub applications.

Application: Local and Long haul, all-position service

## HTL EP 13/32"



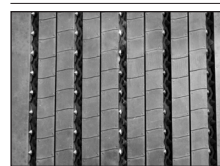
ARTICLE #	WIDTH	DEPTH
18208600000	200	13/32"
18204900000	210	13/32"
18204910000	220	13/32"
18204920000	230	13/32"
18206830000	240	13/32"

- Advanced, fuel efficient compound provides long original mileage and low rolling resistance.
- 13/32" tread depth minimizes tread squirm and irregular wear.
- Visual Alignment Indicators (VAI®) alert user to tire tracking problems.
- Patented innovative groove technology leads to minimum stone retention, extending casing life.



Application: Long Haul, Over the Highway, Trailer Position

## HTL1 13/32"



ARTICLE #	WIDTH	DEPTH
18214670000	390	13/32"
18214680000	400	13/32"
18214690000	410	13/32"

- Optimized compound for regional/long hauling delivers.
- Proven 13/32" tread design.
- New solid shoulder design, for durability.
- Patented innovative groove technology leads to minimum stone retention, extending casing life.



Application: Regional/Long Haul, SS Trailer Position

## HTR2 22/32"

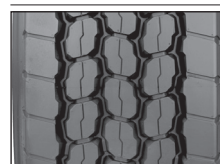


ARTICLE #	WIDTH	DEPTH
18206730000	290	22/32"
18206740000	320	22/32"
18206750000	340	22/32"

- High mileage achieved through precise balance of tread compound and geometry.
- Tread pattern designed for increased stability and reduced noise.
- Patented innovative groove technology leads to minimum stone retention, extending casing life.

Application: Local and Long Haul, All-Position Service

## HTC1 24/32"



ARTICLE #	WIDTH	DEPTH
18206760000	320	24/32"
18206770000	350	24/32"

- Aggressive multi-surface, all-position tread pattern provides excellent traction.
- Outstanding self-cleaning properties ensure a long service life.

Application: Super Single Fitment for Steer and Trailer Positions

# Recommended Buffing Specs

TREAD DESIGN	SIZE	LOAD RANGE	BUFF RADIUS	BUFFED CIRCUM	BUFF WIDTH
Conti EcoPlus HS3	295/75R22.5	G	650	3100	245
	295/75R22.5	H	650	3100	245
	11R22.5	G	650	3200	245
	11R22.5	H	650	3200	245
	11R24.5	G	650	3200	245
	11R24.5	H	650	3200	245
	285/75R24.5	G	650	3200	245
	285/75R24.5	H	650	3200	245
	295/60R22.5	J	650	2800	245
Conti Hybrid HS3	295/75R22.5	G	650	3100	245
	295/75R22.5	H	650	3100	245
	11R22.5	G	650	3200	245
	11R22.5	H	650	3200	245
HSL2 Eco Plus	11R22.5	G	600	3200	235
	11R22.5	H	600	3200	235
	11R24.5	G	600	3350	235
	11R24.5	H	600	3350	235
	275/80R22.5	G	600	3090	235
	275/80R22.5	H	600	3090	235
	285/75R24.5	G	600	3200	230
285/75R24.5	H	600	3200	230	
HSL2+ Eco Plus	295/60R22.5	J	750	2850	255
Conti Coach HA3	255/70R22.5	H	1100	2820	205
	275/70R22.5	J	800	2910	245
	315/80R22.5	L	800	3285	265
HSL1 Coach	315/80R22.5	L	1000	3270	260
Conti Hybrid HS3 - 19.5"	225/70R19.5	G	900	2450	200
	245/70R19.5	H	1100	2520	220
	265/70R19.5	H	1100	2620	225
	285/70R19.5	H	1100	2760	240
	305/70R19.5	J	1200	2790	245
Conti CrossTrac HA3	11R22.5	G	650	3200	245
	11R22.5	H	650	3200	245
	11R24.5	G	650	3350	245
	11R24.5	H	650	3350	245
	12R22.5	H	650	3300	245
	275/80R22.5	G	650	3100	245
	275/80R22.5	H	650	3100	245
	285/75R24.5	G	650	3200	245
	285/75R24.5	H	650	3200	245
	HSR2	10R22.5	G	650	3080
11R22.5		G	600	3190	230
11R22.5		H	600	3190	230
11R24.5		G	600	3345	230
11R24.5		H	600	3345	230
12R22.5		H	600	3300	240
275/80R22.5		G	550	3065	225
275/80R22.5		H	550	3065	225
285/75R24.5		G	900	3170	225
285/75R24.5		H	900	3170	225

TREAD DESIGN	SIZE	LOAD RANGE	BUFF RADIUS	BUFFED CIRCUM	BUFF WIDTH
HSR2 Eco Plus	275/80R22.5	G	550	3065	225
	275/80R22.5	H	550	3065	225
HSR2 SA	255/70R22.5	H	750	2820	205
	275/80R22.5	H	650	3080	225
	295/80R22.5	H	1000	3230	255
	315/80R22.5	L	1200	3285	260
HSR1	225/70R19.5	G	600	2450	195
	245/70R19.5	H	900	2530	210
	265/70R19.5	H	900	2670	220
	285/70R19.5	H	900	2710	225
	305/70R19.5	J	900	2800	250
	275/70R22.5	J	800	2930	240
HSR	225/70R19.5	G	600	2460	195
Conti Urban HA3	275/70R22.5	H	600	2920	245
	305/70R22.5	J	600	3060	260
HSU1	275/70R22.5	H	800	2870	240
	305/70R22.5	J	750	3050	260
HSU2 WT	315/80R22.5	L	600	3290	280
Conti CityService HA3	315/80R22.5	L	800	3290	280
HSC1	11R22.5	H	550	3195	215
	11R24.5	H	900	3370	230
	12R22.5	H	600	3300	240
HCS	12R24.5	H	1200	3455	245
	445/65R22.5	L	1500	3475	380
	215/75R17.5	F	450	2350	195
LSU	LT225/75R16	E	500	2285	185
	LT245/75R16	E	500	2380	205
	10R17.5	H	650	2600	185
	215/75R17.5	F	700	2330	185
	235/75R17.5	F	1100	2450	200
	Conti EcoPlus HD3	11R22.5	G	850	3200
11R22.5		H	850	3200	245
11R24.5		G	850	3360	245
11R24.5		H	850	3360	245
295/75R22.5		G	850	3100	245
295/75R22.5		H	850	3100	245
285/75R24.5		G	850	3200	245
285/75R24.5		H	850	3200	245
295/60R22.5		J	850	2785	245
Conti Hybrid HD3 - 19.5"		225/70R19.5	G	900	2450
	245/70R19.5	G	1100	2545	225
	245/70R19.5	H	1100	2545	225
	265/70R19.5	H	1100	2650	235
	285/70R19.5	H	1100	2745	245
Conti Hybrid HD3	11R22.5	G	850	3200	245
	11R22.5	H	850	3200	245
	11R24.5	G	850	3360	245
	11R24.5	H	850	3360	245
	295/75R22.5	G	850	3100	245
	225/70R19.5	G	900	2460	195

TREAD DESIGN	SIZE	LOAD RANGE	BUFF RADIUS	BUFFED CIRCUM	BUFF WIDTH
HDL Eco Plus	11R22.5	G	600	3200	225
	11R22.5	H	600	3200	225
	11R24.5	G	600	3360	225
	11R24.5	H	600	3360	225
	275/80R22.5	G	600	3100	225
	275/80R22.5	H	600	3100	225
	285/75R24.5	G	600	3100	225
	285/75R24.5	H	600	3100	225
HDL2	295/75R22.5	G	800	3100	245
	295/75R22.5	H	800	3100	245
	11R22.5	G	900	3200	245
	11R22.5	H	900	3200	245
	11R24.5	G	900	3360	245
	11R24.5	H	900	3360	245
	285/75R24.5	G	900	3200	245
	285/75R24.5	H	900	3200	245
HDL2 DL	11R22.5	G	900	3200	245
	11R22.5	H	900	3200	245
	11R24.5	G	900	3360	245
	11R24.5	H	900	3360	245
	275/80R22.5	G	900	3100	245
	285/75R24.5	G	900	3200	245
HDL2 DL Eco Plus	275/80R22.5	G	900	3100	245
	285/75R24.5	G	900	3200	245
	11R22.5	G	900	3200	245
	11R22.5	H	900	3200	245
	11R24.5	G	900	3360	245
	11R24.5	H	900	3360	245
HDL2+ Eco Plus	295/60R22.5	J	900	2820	255
HDR2	11R22.5	G	850	3200	245
	11R22.5	H	850	3200	245
	11R24.5	G	850	3360	245
	11R24.5	H	850	3360	245
	12R22.5	H	600	3290	240
	295/75R22.5	G	850	3100	245
	295/75R22.5	H	850	3100	245
	285/75R24.5	G	850	3200	245
	285/75R24.5	H	850	3200	245
	315/80R22.5	L	750	3290	260
	HDR2 Eco Plus	11R22.5	G	850	3200
11R22.5		H	850	3200	245
295/75R22.5		G	850	3100	245
295/75R22.5		H	850	3100	245
HDR1		11R22.5	G	600	3200
	11R22.5	H	600	3200	220
	11R24.5	G	600	3345	220
	11R24.5	H	600	3345	220
	275/80R22.5	G	600	3100	225
	275/80R22.5	H	600	3100	225
	285/75R24.5	G	600	3200	225
	285/75R24.5	H	600	3200	225
	HDR1 Eco Plus	275/80R22.5	G	600	3100
275/80R22.5		H	600	3100	225

TREAD DESIGN	SIZE	LOAD RANGE	BUFF RADIUS	BUFFED CIRCUM	BUFF WIDTH
HDR	225/70R19.5	G	900	2450	190
	245/70R19.5	H	1200	2525	215
	265/70R19.5	H	900	2660	225
	285/70R19.5	H	800	2700	245
	255/70R22.5	H	700	2780	210
	275/70R22.5	H	650	2900	245
	HDC1 HT	11R22.5	H	700	3360
11R24.5		H	700	3360	245
HDC1	11R22.5	H	600	3200	225
	11R24.5	H	600	3360	225
HDO	11R22.5	H	600	3200	225
	11R24.5	H	600	3360	225
Conti Terra HD3 - 19.5"	225/70R19.5	G	900	2460	195
	245/70R19.5	H	1000	2540	220
Conti Scandinavia HD3 - 19.5"	225/70R19.5	G	900	2460	195
	245/70R19.5	H	1100	2540	220
HDW2	11R22.5	H	600	3200	250
	11R24.5	H	600	3360	250
	315/80R22.5	L	800	3230	260
LDR1	215/75R17.5	F	700	2340	190
	235/75R17.5	F	1100	2430	205
Conti EcoPlus HT3	11R22.5	G	700	3185	245
	11R22.5	H	700	3185	245
	11R24.5	G	700	3185	245
	11R24.5	H	700	3185	245
	295/75R22.5	G	900	3100	245
	285/75R24.5	G	900	3180	245
HTL2 Eco Plus	215/75R17.5	J	500	2340	180
	235/75R17.5	J	500	2430	195
	245/70R17.5	J	700	2465	200
HTL1	445/50R22.5	L	2200	3050	405
HTR2 - 17.5"	215/75R17.5	H	500	2340	180
	235/75R17.5	H	700	2430	200
HTR2	385/65R22.5	L	1500	3240	315
	425/65R22.5	L	1000	3415	340
	445/65R22.5	L	1000	3570	355
HTL EcoPlus	11R22.5	G	550	3200	220
	11R24.5	G	550	3350	220
	255/70R22.5	H	650	2780	210
	275/80R22.5	G	500	3100	225
	285/75R24.5	G	500	3200	225
	245/70R19.5	J	700	2530	225
Conti Hybrid HT3 - 19.5"	265/70R19.5	J	700	2620	235
	285/70R19.5	J	700	2700	245
	265/70R19.5	J	900	2630	225
HTR1	285/70R19.5	J	900	2715	235
	HTC1	385/65R22.5	L	1500	3225
425/65R22.5		L	1500	3420	330
445/65R22.5		L	1400	3485	370
HTC	275/70R22.5	H	650	2940	235